

BinaxNOW[®]

Streptococcus pneumoniae

Interpretation of Results

Read test results at 15 minutes.

NEGATIVE RESULT



ONE pink-to-purple colored Control Line will appear in the top half of the window.

POSITIVE RESULT



TWO pink-to-purple colored lines will appear in the window. Specimens with low levels of antigen may give a faint Sample Line. Any visible Sample Line is positive.

INVALID RESULT



Sample Line Only No Lines

The test is invalid when no lines appear, just the Sample Line appears, or background color interferes with the reading of the test.

Reporting of Results


Positive Urine – Positive for pneumococcal pneumonia.

Negative Urine* – Presumptive negative for pneumococcal pneumonia, suggesting no current or recent pneumococcal infection.

Positive CSF – Positive for pneumococcal meningitis.

Negative CSF* – Presumptive negative for pneumococcal meningitis.

*A negative result does not rule out *S. pneumoniae* infection since the antigen present in the sample may be below the detection limit of the test.

 inverness medical

 Manufactured by:
Binax, Inc.
10 Southgate Road, Scarborough, Maine 04074 USA



EC REP

EMERGO EUROPE
Molenstraat 15
2513 BH, The Hague
The Netherlands
Phone: +31.70.345.8570
Fax: +31.70.346.7299

BinaxNOW[®]

Streptococcus pneumoniae

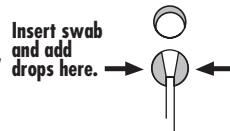
Patient Sample Procedure Card

See product insert for complete instructions, including Control Swab procedure.

1 Bring patient samples and/or liquid control(s) to room temperature (59-86°F, 15-30°C), then swirl gently to mix. **Just prior to use**, open pouch, remove test device, and lay flat.

2 Dip a Binax swab into the sample, completely immersing the swab head. If necessary, touch swab to side of container to remove excess liquid.

3 Insert swab into the hole at the bottom of the device and firmly push upwards so that the swab tip is fully visible in the top hole. **DO NOT REMOVE SWAB.**

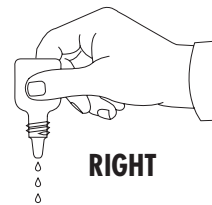


4 Hold Reagent A vial vertically, 1/2 to 1 inch above the device. Slowly add **3 free falling DROPS** to the **BOTTOM** hole.

WRONG



RIGHT



NOTE: Improper delivery of liquid reagents can cause **INVALID** test results

5 Immediately peel off adhesive liner from the right edge of the test device. Close and securely seal the device. Read result in window 15 minutes after closing the device. Strongly positive patients may be discernible sooner.

NOTE: For convenience, the swab shaft has been scored and may be snapped off after closing the device. Avoid dislodging the swab from the well when doing so.

CONTROL WINDOW
SAMPLE WINDOW



Read Result in Window